

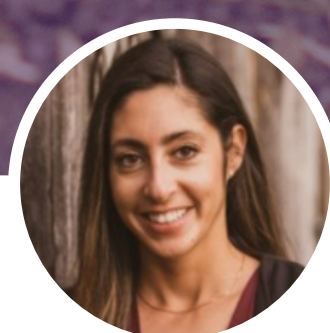
# STRONGER TOGETHER: NEWCOMER MENTAL HEALTH PARTNERS DAY

**THURSDAY, AUGUST 7, 2025**  
**9 AM - 1 PM**

**MARY J. WRIGHT CHILD AND YOUTH DEVELOPMENT CLINIC**  
**1137 WESTERN RD, LONDON, ON N6G 1G7**



**DR. COLIN KING**  
HOST, MJW-CYDC



**DR. AMANDA KERRY**  
HOST, CSMH

Western University's Mary J. Wright Child and Youth Development Clinic (MJW-CYDC) and the Centre for School Mental Health (CSMH) warmly invite you to a Partner Day focused on the mental health and well-being of newcomer children, youth, and families in London, ON. Join us to share insights, exchange best practices and strengthen our community partnerships to better support the mental health needs of newcomer children, youth and families. This event welcomes all front-line professionals and students interested and dedicated to the well-being of newcomer populations.

## AGENDA

MJW-CYDC IN THE COMMUNITY  
CSMH & STRONG INTERVENTION  
COMMUNITY OF PRACTICE: NEWCOMER MENTAL HEALTH  
TOUR OF THE NEW MJW-CYDC PSYCHOLOGY CLINIC  
LUNCH



**REGISTER  
BY JULY 28**

**[HTTPS://BIT.LY/PARTNERDAY2025](https://bit.ly/partnerday2025)**

FOR QUESTIONS,  
**GKAYSSI@UWO.CA**